



## Annual Review 2018/19









## Welcome

Bobath Children's Therapy Centre Wales provides physiotherapy, occupational therapy and speech and language therapy to children all over Wales who have cerebral palsy. Bobath therapists work together as a team to combine these disciplines and give each child the skills to explore their world, communicate their needs, maximise their potential and so improve their quality of life.

At Bobath Children's Therapy Centre Wales we focus on the ability and not the disability.

## Chairman's Message

I am delighted to introduce our 2018/19 annual review. Whether you have been involved with the charity for many years or are reading this document for the first time, I hope you enjoy this overview and summary of the year's highlights.

We have continued to drive forward our major strategic projects catalysed by the transformational gift from the Moondance Foundation in the previous financial year. Most notably, we have focused on the further development of the Cerebral Palsy Register for Wales and continued to explore options for increasing our capacity including our premises requirements as aligned with our targeted service provision whilst addressing our income generation activities with a view to maintaining a robust reserves position.

On behalf of my fellow trustees, I would like to thank everyone involved in the life-changing services that Bobath Children's Therapy Centre Wales undertakes. Our involvement with this charity is a real honour and it only remains to wholeheartedly convey our deep appreciation to the highly skilled staff, dedicated volunteers, generous supporters, and loyal patrons for enabling us all to enjoy another successful year.

**J Frank Holmes**



In total, we delivered **1682** sessions of therapy throughout Wales,  
and treated **286** individual children.

The Better Start Programme, which has been a key focus of the last two years, is the starting point for many of our children's journeys and provides them with life-changing therapy as early as possible.



We hosted our first Early Intervention Course for therapists wanting to learn more about providing support for high risk babies. The course was attended by some of our therapy team and other professionals from all over the UK. It ran for six days and twelve babies received treatment.

Our Jungle Adventurers Programme was held in February for children with hemiplegia aged six to eight, helping them to learn new skills and build friendships. One mum said, 'Kitty has loved her time at the Camp, she has grown in confidence, strength and ability.'



Our waiting list continues to grow, demonstrating the huge need for the work that we do. This has been the case for the last few years and has led the Board of Trustees and Senior Management Team to think differently about our services and how we provide them.





111

Sessions delivered outside our Centre in the community.



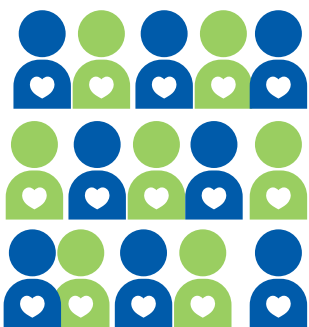
Children aged six to eight took part in our 'Jungle Adventurers Programme' funded by Children in Need.

3

Sleep consultations delivered by our Family Support Coordinator.

110

Family support meetings delivered.



15

Bobath therapists employed by Bobath Wales.

9

Coffee mornings hosted, including one regional location.



600 metres

Shortest distance travelled by a family to our centre for therapy.



132 miles

Longest distance travelled by a family to our centre for therapy.



# Therapy Update

It has been an incredibly busy and exciting year. Alongside providing therapy for the children and families, we have been developing several major projects.

To make the best use of our valuable resources, we are evolving our services. We have started to develop key pathways for different presentations of cerebral palsy which aim to be delivered at times of key transitions; starting school, transferring to secondary education, teenage years etc. One example of where this has already been introduced is our Jungle Explorers and Jungle Adventurers programmes for children who have a unilateral (one sided) presentation of cerebral palsy. These sessions have been hugely enjoyable for all involved and showed clear benefits for the children, both in physical skills and confidence. These changes have led us to consider whether the name of the centre still completely represents the diverse specialist service we provide. We will continue to look at this over the coming year.

We now have 14 different models of service. About one third of our services are delivered locally in conjunction with community/NHS therapists. This is part of providing the services that families and local teams want. In the financial year 2018-2019 we provided 111 therapy sessions in the community. This will increase next year.

## A new home for Bobath Wales

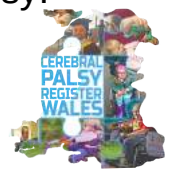
Currently, the services we offer are limited by our space. Treatment rooms are used for Family Support Sessions, meetings and courses, as well as for therapy. We are therefore looking to increase our space in the near future. Our preferred option is a move to larger premises to create a modern, fit-for-purpose children's centre. We are currently investigating possible locations and funding, with our gift from the Moondance Foundation in 2017 as a catalyst.

## A Cerebral Palsy Register for Wales

This is a Wales-wide multi-agency project led by our Centre Director, Jennifer Carroll and Dr Rachel Lindoewood, Consultant Paediatrician from Powys. We have a steering group of 32 people, including individuals who have cerebral palsy and their families, and professionals from 16 different disciplines. This project has the potential to change the lives of families in Wales living with cerebral palsy.



@CP\_Reg\_Wales





## Cerebral Palsy Leads

This group remains an important part of our strategy to support services across Wales for children who have cerebral palsy. Lead clinicians for cerebral palsy from each Local Health Board attend these clinical leadership days and our aim is to support them in leading clinical excellence locally.

"We work towards further success next year and thank all the community therapists for the tremendous support we receive.

I would also like to thank the families and the Bobath Wales staff team for the phenomenal support the centre receives."

## Leading the way in education

This year we held an Introductory Course and an Assistants Course at our therapy centre in Cardiff, both of which were well received. We have reverted to our 3 day introductory course model, which gives us a little more time for discussion and incorporates more information for participants. Our therapy centre also hosted an Early Intervention Course, the Mini-AHA and Infant Motor Profile courses. We plan to provide more courses once we have more space.



Jennifer J Carroll MA MCSP PGC(HE)  
Centre Director / Consultant Physiotherapist



## EBTA Congress 2018

In 2018 the European Bobath Tutors Association (EBTA) congress was held in Brighton, UK. Bobath Wales played a major role in planning, organising and delivering this congress, which was a great success. Our therapy team presented 2 lectures and 7 academic posters.





**1179** individuals and organisations helped us raise funds. Thank you!



**925** individuals donated to Bobath Wales (one off and monthly donations).



The 'Designer and New Label' sale raised **£4,462** in just 8 hours.



**53** new volunteers signed up to help us in our five charity shops.



**Fundraising photo album  
2018-19**

**A snapshot of our year!**



Thank you for your grant of **£5,703** towards our Early Intervention Service.





**12** individuals took on our Snow Trek in Sweden and raised **£15,944**.



**THOUSANDS** of cakes were baked and eaten during 'Bake for Bobath'.



**11** young men completed the Welsh Three Peaks, raising **£3,914**.



Members of fundraising and therapy visited Westminster Palace to raise awareness of Bobath Wales.

# THANK YOU!

to everyone who supported us in 2018-19. Without you, we simply could not have made a positive difference to so many children and families living with cerebral palsy!



Festive fun at Pugh's Garden Village raised **£12,000**.



# Fundraising Update

Every gift to Bobath Children's Therapy Centre Wales makes a difference to children and families living with cerebral palsy across Wales. Therefore, we want to take this opportunity to thank each and every one of you who supported us in 2018/19. **We simply could not do what we do without you!**

As you will see from our accounts for this financial year, **79% of our income came from donations, gifts in wills, retail and fundraising activities.** It is also important to celebrate the remarkable fact that **46%** of our fundraised income came from the **donations and purchases of pre-loved goods** in our 5 charity shops across South Wales.

Whilst we are grateful for every gift, we must give a special mention to the late Ms Valerie Seaward who bequeathed a substantial gift to the charity in her Will. In making this gift, Valerie Seaward has enabled us to provide **life-changing therapy to many children** this year.

I hope that in reading this Annual Review, you will feel assured and proud that whether you have donated to our shops, made a financial gift, attended an event or volunteered with us, that your time, expertise and kindness has helped to **make a difference** to children and families in Wales living with cerebral palsy.

Thank you very much / diolch yn fawr,

Rachel Morgan  
Head of Income Generation

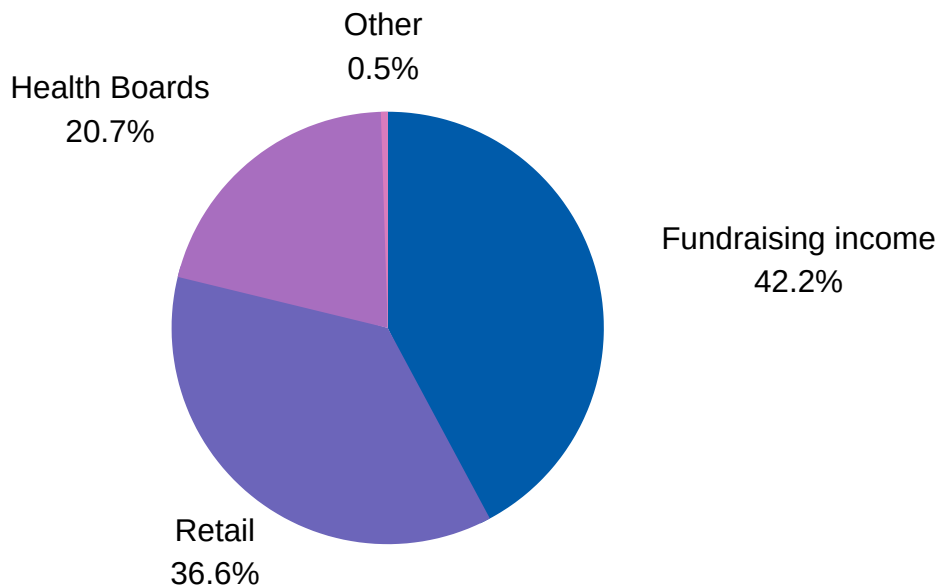




# Financial Report

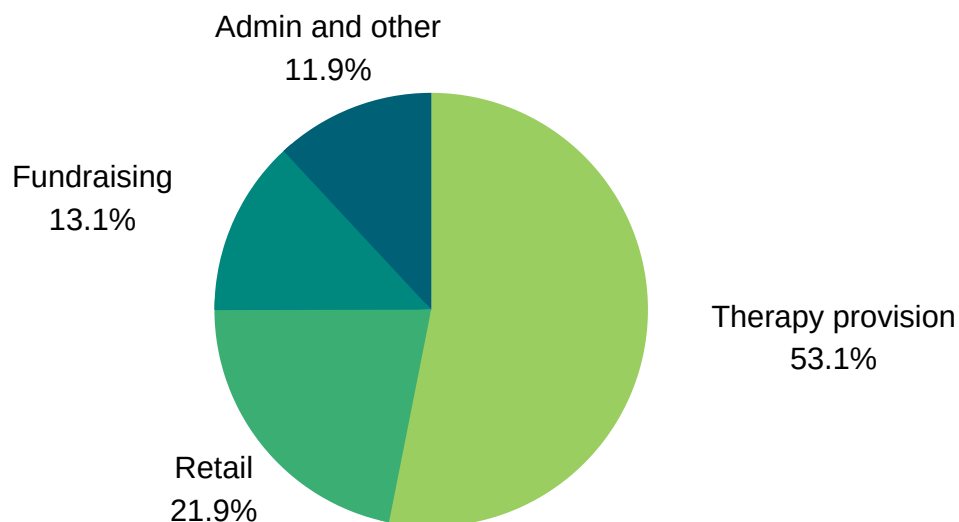
Total Income **£1,516,733**

- Fundraising income **£639,492**
- Retail **£555,621**
- Health Boards **£313,922**
- Other **£7,698**



Total Expenditure **£1,541,514**

- Therapy provision **£818,852**
- Retail **£336,836**
- Fundraising **£201,915**
- Admin and other **£183,911**



At Bobath Children's Therapy Centre Wales, we are committed to providing all services free of charge to every family who needs us. In order to maintain this, diversity of income is key; our income over the past year has come from a wide variety of sources. With 5 charity shops across South Wales, our retail income continues to grow and is now over 1/3 of our total income. Our contracts with all Welsh NHS boards fund many of our children from around 4 years old, whilst the babies we see are funded by the other charitable sources.

We are very grateful for the numerous (and ingenious!) ways our supporters raise funds and for their hard work to ensure that every pound is put towards life-changing services for children and families living with cerebral palsy across Wales.

## Bobath Children's Therapy Centre Wales

19 Park Road, Whitchurch,  
Cardiff, CF14 7BP  
Tel: 02920 522 600  
Fax: 02920 521 477  
Email: info@bobathwales.org

[www.bobathwales.org](http://www.bobathwales.org)

Find us on   



Registered Charity: 1010183  
Limited Company Number: 02691690

### Trustees

Frank Holmes  
Christine Barber  
Caroline Cooksley  
Ieuan Coombes  
Martin Gush  
Stephen Jones  
Paul Lubas  
Cathy White  
Marie Wood

### Auditors

Clifton House Partnership,  
Clifton House, Four Elms Road,  
Cardiff, CF24 1LE

### Bankers

Barclays Bank plc, St David's Way,  
Cardiff, CF10 2DP

